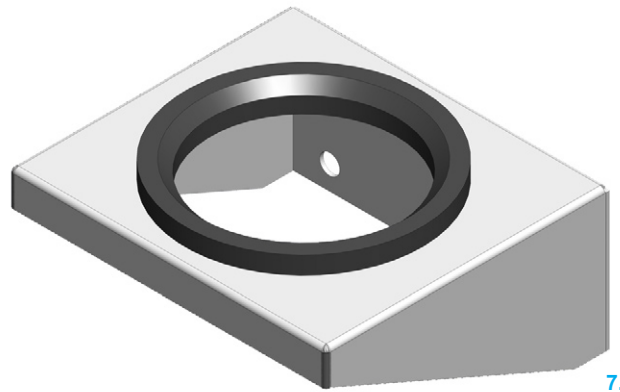


7.2.1 DESCRIPTION

Brackets can be used with all type of accumulators. Secure design provides independent mounting on installations.

Rubber insert provided to reduce mechanical vibration, to compensate for shell manufacturing tolerances and to not lie with outward stresses on the connection.

The brackets can be easily bolted to the system. We recommend using a bracket and support ring with one or two clamps or U-bolts.



7.2a

7.2.2 CONSTRUCTION

All the brackets are manufactured of galvanized carbon steel in compliance to directive 2002/95/CE (RoHS) for resist to the corrosion, on request they can be supplied in stainless steel version.

The support ring is manufactured of black NBR rubber nitrile at 85 Shore A.

7.2.3 BRACKET ORDER CODE

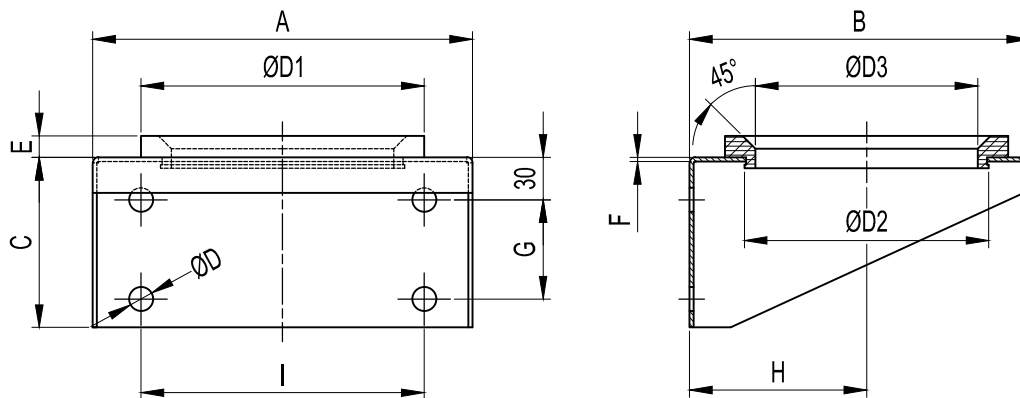


| | |
|---|---------------------|
| 1 | Series |
| | Bracket = MA |

| | |
|---|--|
| 2 | Nominal diameter |
| | Nominal internal diameter 100 = 100 150 = 150 |

| | |
|---|--|
| 4 | Support ring material |
| | Rubber in NBR = P Other on request |

| | |
|---|---|
| 3 | Clamp material |
| | Carbon steel galvanized = C Stainless steel AISI 316 = X |



7.2b

7.2.4 BRACKET DIMENSIONS

| Bracket nominal size | A | B | C | ØD | ØD1 | ØD2 | ØD3 | E | F | G | H | I | Weight (Kg) |
|----------------------|-----|-----|-----|----|-----|-----|-----|----|---|----|-----|-----|-------------|
| 100 | 200 | 175 | 90 | 11 | 140 | 120 | 90 | 10 | 3 | 40 | 96 | 140 | 1,5 |
| 150 | 260 | 232 | 120 | 17 | 200 | 170 | 150 | 15 | 3 | 70 | 125 | 200 | 3,6 |
| 150-1 | 260 | 235 | 120 | 17 | 200 | 170 | 150 | 15 | 3 | 70 | 128 | 200 | 3,7 |

7.2c

7.2.5 SUPPORT RING ORDER CODE

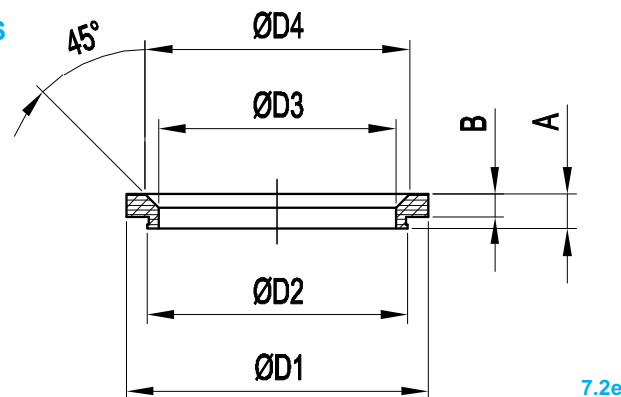


| | |
|---|--------------------------|
| 1 | Series |
| | Support ring = AG |

| | |
|---|--|
| 2 | Nominal diameter |
| | Nominal internal diameter 100 = 100 150 = 150 |

| | |
|---|--|
| 3 | Support ring material |
| | Rubber in NBR = P Other on request |

7.2.6 SUPPORT RING DIMENSIONS



7.2e

| Support Ring nominal size | A | B | ØD1 | ØD2 | ØD3 | ØD4 | Weight (Kg) |
|---------------------------|----|----|-----|-----|-----|-----|-------------|
| 100 | 18 | 10 | 140 | 120 | 100 | 112 | 0,13 |
| 150 | 23 | 15 | 200 | 170 | 150 | 175 | 0,22 |

7.2f

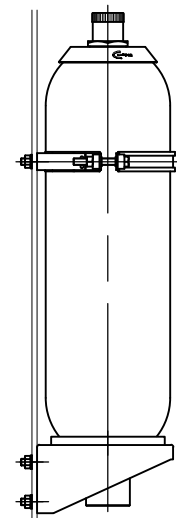
7.2.7 USAGE TABLE

| Bracket nominal size | Supporting ring nominal size | Bladder accumulator type | Additional bottle type |
|----------------------|------------------------------|---|---|
| 100 | 100 | AS / ASP 5 ASL / AST 5 ASB 1.5 - 3 ASBL / ASBT 1.5 - 3 ASA 1 | ASS 5 ASSA 1 |
| 150 | 150 | AS / ASP 10 ÷ 55 ASL / AST 10 ÷ 55 ASB 10 ÷ 55 ASBL / ASBT 10 ÷ 55 ASA 2.5 ÷ 15 | B 52-75 ASS 10 ÷ 55 ASSA 2.5 ÷ 15 AB **/** 180 |

7.2g

7.2.8 MOUNTING

Example for mounting.



7.2h

Reproduction Is Forbidden.

In The Spirit Of Continuous Improvement, Our Products May Be Changed.